

# NEW HAVEN POLICE DEPARTMENT



---

Smart Policing  
New England Regional Meeting  
9/25/12

# Introduction

- **Purpose Area 3** - For law enforcement agencies seeking to inculcate evidence-based and innovative policies, procedures, tactics, and strategies throughout their organization in creative ways that reach beyond tactical approaches in one area of the department or community.
- **Goal** - To develop processes and procedures to sustain and support the use of evidence-based policing at all department levels and seek to utilize research to inform police leadership and improve decision making throughout the department.

# Key Strategies & Initiatives

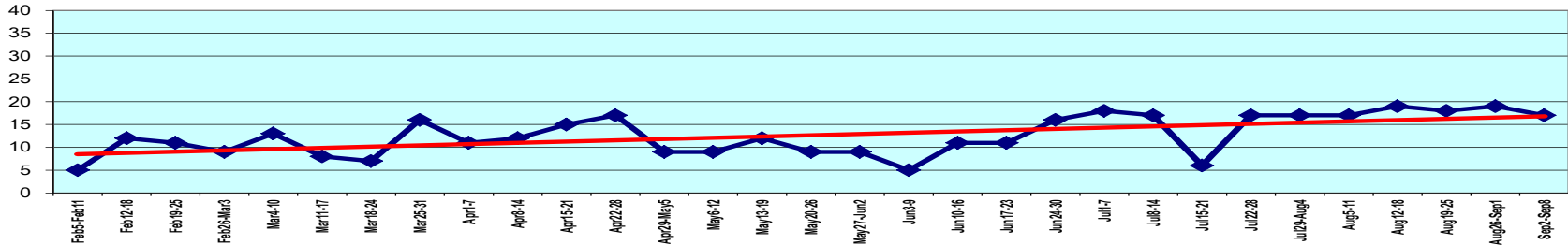
- Organizational change & institutionalization of community-oriented & evidence-based policies.
- Accomplished through:
  - Training
    - Leadership/Problem-Solving curriculum for supervisors
  - Community Partnerships
    - LE agencies
    - Block Watches
    - Youth/Church communities
  - Information Management & Dissemination
    - Standardize collection procedures
    - Disseminate throughout Department & community

# Crime Trends Impacting New Haven

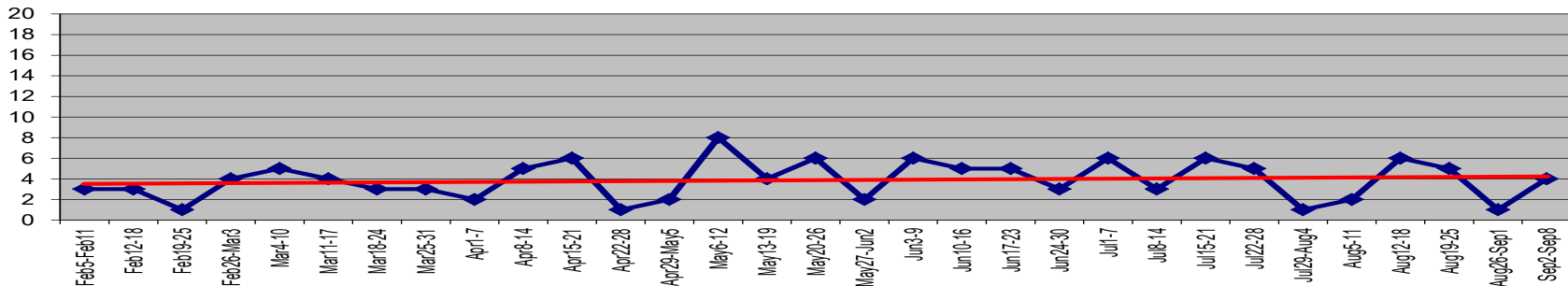
- Violent Crime

- Homicide: -56%
- Assault with Firearm: -26.7%
- Robbery: +9.8%

ROBBERY INCIDENTS - FEB 5 THROUGH SEP 8 2012



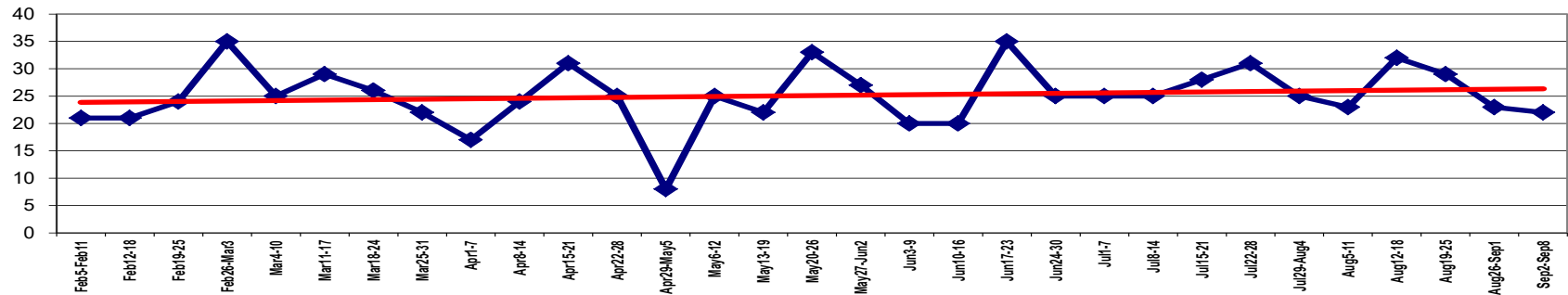
AGGRAVATED ASSAULT - FEB 5 THROUGH SEP 8 2012



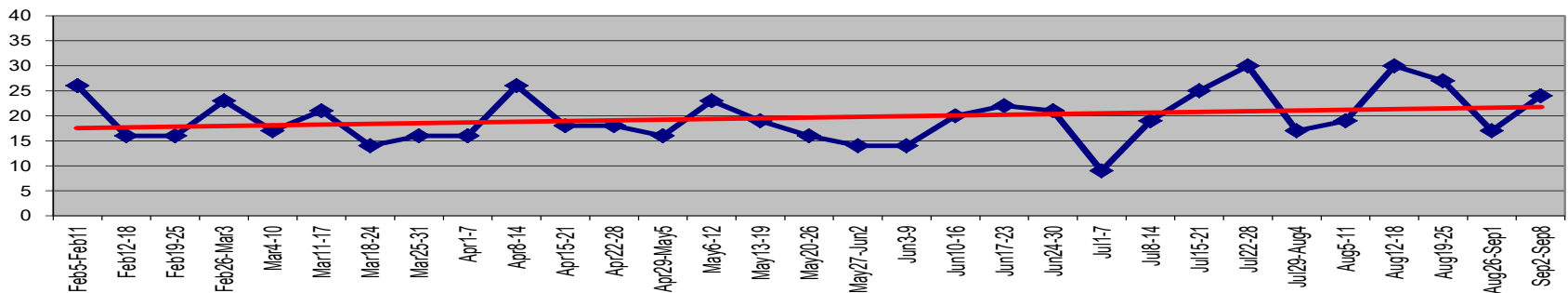
# Crime Trends Impacting New Haven

- Property Crime
  - Burglary: -2.8%
  - MV Theft: -19.1%
  - Theft from Auto: -14%

BURGLARY INCIDENTS - FEB 5 THROUGH SEP 8 2012



THEFT FROM AUTO - FEB 5 THROUGH SEP 8 2012




# SPI Activities & Progress

- Compstat
  - Weekly
    - Previously once/six weeks
  - Data Driven
    - Display and compare District crime stats
    - Problem-Solving
  - Collaborative
    - Representative of regional and community partners.
    - Increased participation and accountability



# SPI Activities & Progress

- Flash Sheet
  - Previous days crime stats
  - Maps
  - Wanted person bulletins
  - Arrest notices
  - Upcoming community events
  - Disseminated to line officers as well as the community on a daily basis



New Haven Police Department  
**FLASH SHEET**  
*Confidential Police Information*


Volume 1, Issue 164 **Thursday, 20 September, 2012** Dean M. Esserman  
*Chief of Police*

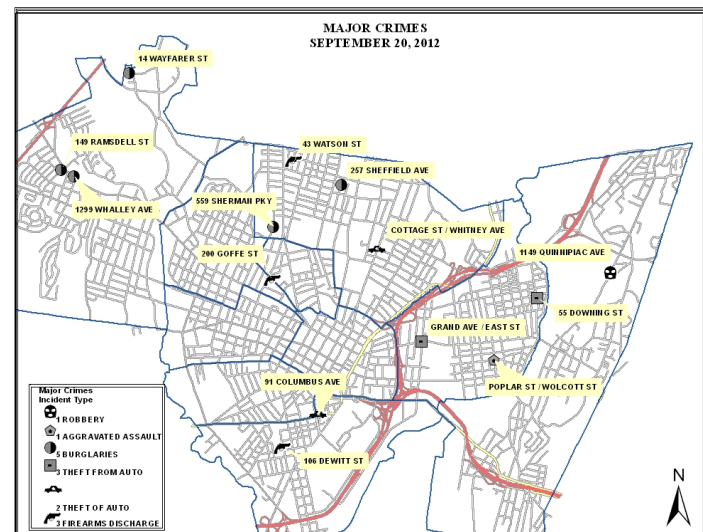
**SPECIAL EVENTS & MEETINGS**

- 20 September, 2012 - **Concert**  
9:00 PM, "BARSTOOL BLACKOUT" at Toad's Place (3)
- 21 September, 2012 - **Concert**  
8:45 PM, "Badfish" at Toad's Place (3)
- 21 September, 2012 - **College Athletics**  
7:00 PM, **Yale men's varsity soccer** at Reese Stadium (1)

1 Reese Stadium is a Yale University athletic facility located at 75 Central Avenue adjacent to The Yale Bowl. Its minimum seating capacity is 1766.  
2 The Shubert Theater is located at 247 College Street. Its minimum seating capacity is 1591.  
3 Toad's Place is located at 300 York Street. Its minimum occupancy is 955 (650 for the main hall, 205 for Lilly's Pad & 0 for the bar area)

**Crowd Control & Safety issues with this event have been reported in other US cities. The issues have included dangerously intoxicated patrons, fights, assaults, over crowded venues, assaults on Police Officers and arrests.**

 Four New Haven Police recruits join the patrol division after graduating the P.O.S.T. Academy this week. The Officers graduated on Monday and will begin field training almost immediately. There is a swearing in ceremony scheduled for Friday, 21 September, 2012 at 5:30 PM at Police Headquarters.



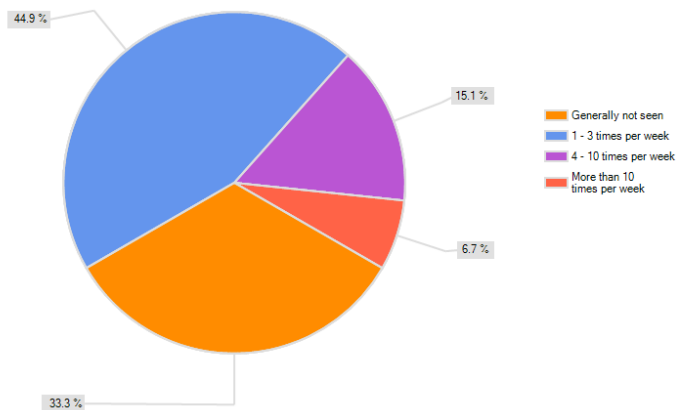
# SPI Activities & Progress

## • Walking Beats

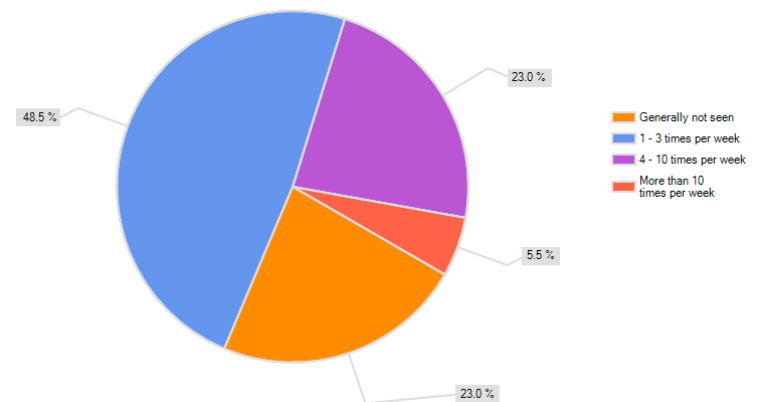
- Reinitiated in each of New Haven's 10 Districts
- Develop relationship with community and deter crime
- House visits
- Measuring effectiveness through data collection and community survey

“...I think this is helpful for deterring crime, if not, at least it makes me feel safer overall.”

How often did you see New Haven Police officers in your neighborhood in 2011?



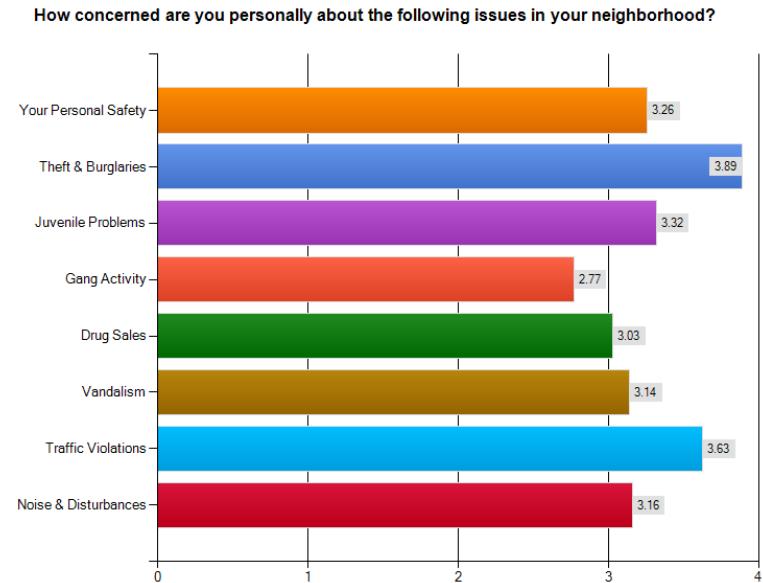
How often do you see New Haven Police officers in your neighborhood currently?





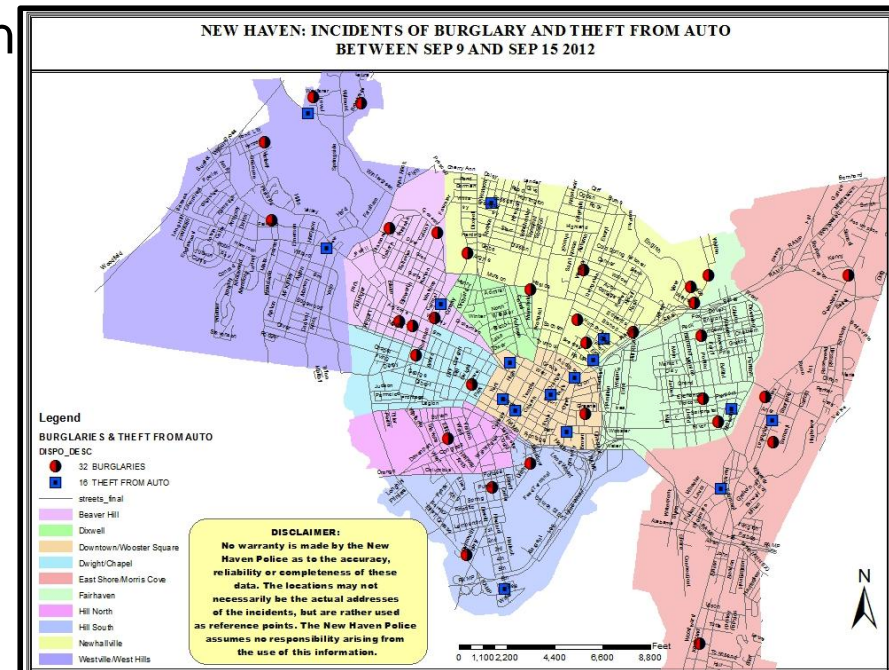
# SPI Activities & Progress

- Community Survey
  - Measure community's perception of the NHPD and provide a forum for citizens to voice their opinions.
- Preliminary Findings:
  - Burglary/Vehicle break-ins
  - Foot patrols
  - Feedback
  - ~60% satisfied with overall police service
- Challenge – Study sample.



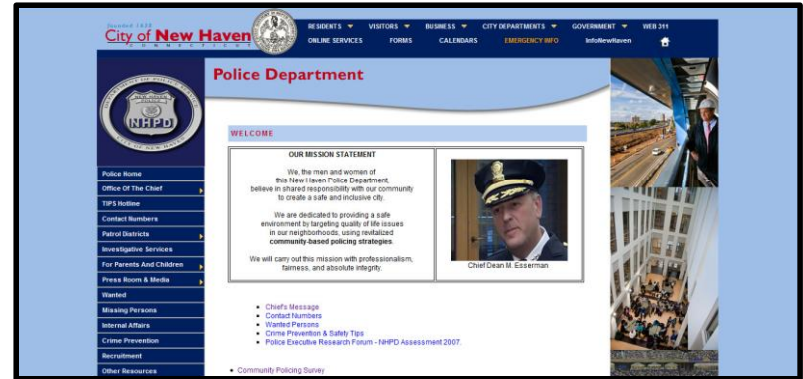
# SPI Activities & Progress

- Increased Partnerships with Community
  - Compstat
  - Youth Cabinet
  - Yale and University of New Haven
  - Clergy Ambassador Program
  - Block Watches
  - DCF at Headquarters



# SPI Activities & Progress

- Hired a Senior Crime analyst
- Updating NHPD website
- Moving towards pilot of electronic incident reporting
- Recruit training in Compstat/problem solving

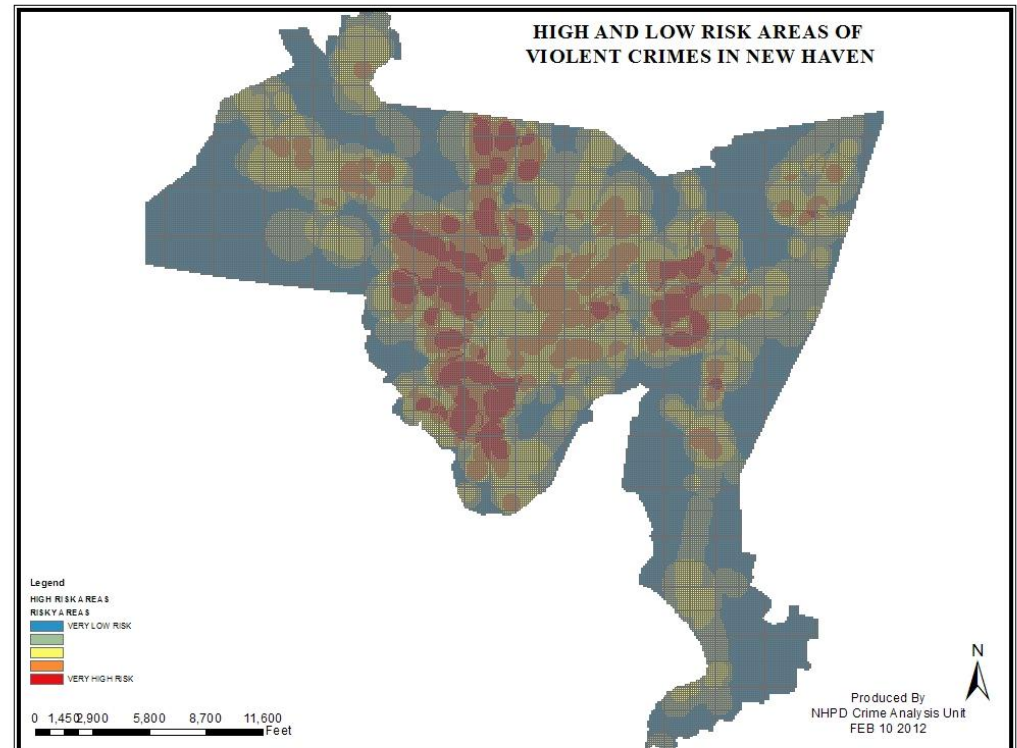
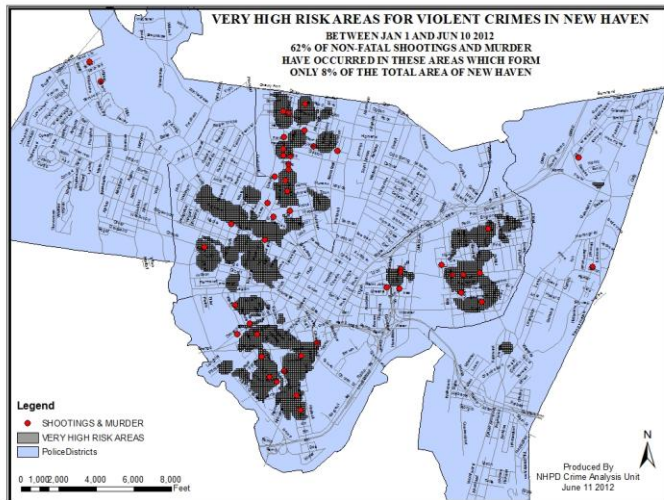


# Strengths/Challenges – Crime Analysis

- Risk Terrain Modeling
- Threshold Analysis
- Compstat
- Development of I2 Robbery database
- Acquired Tableau software

# Strengths/Challenges – Crime Analysis

- Risk Terrain Modeling
  - Business Infrastructure
  - Schools
  - Bus Stops
  - Prob/Parole



# Strengths/Challenges – Crime Analysis

- Threshold Analysis

- Identify Abnormally low/high crime levels on a weekly basis.

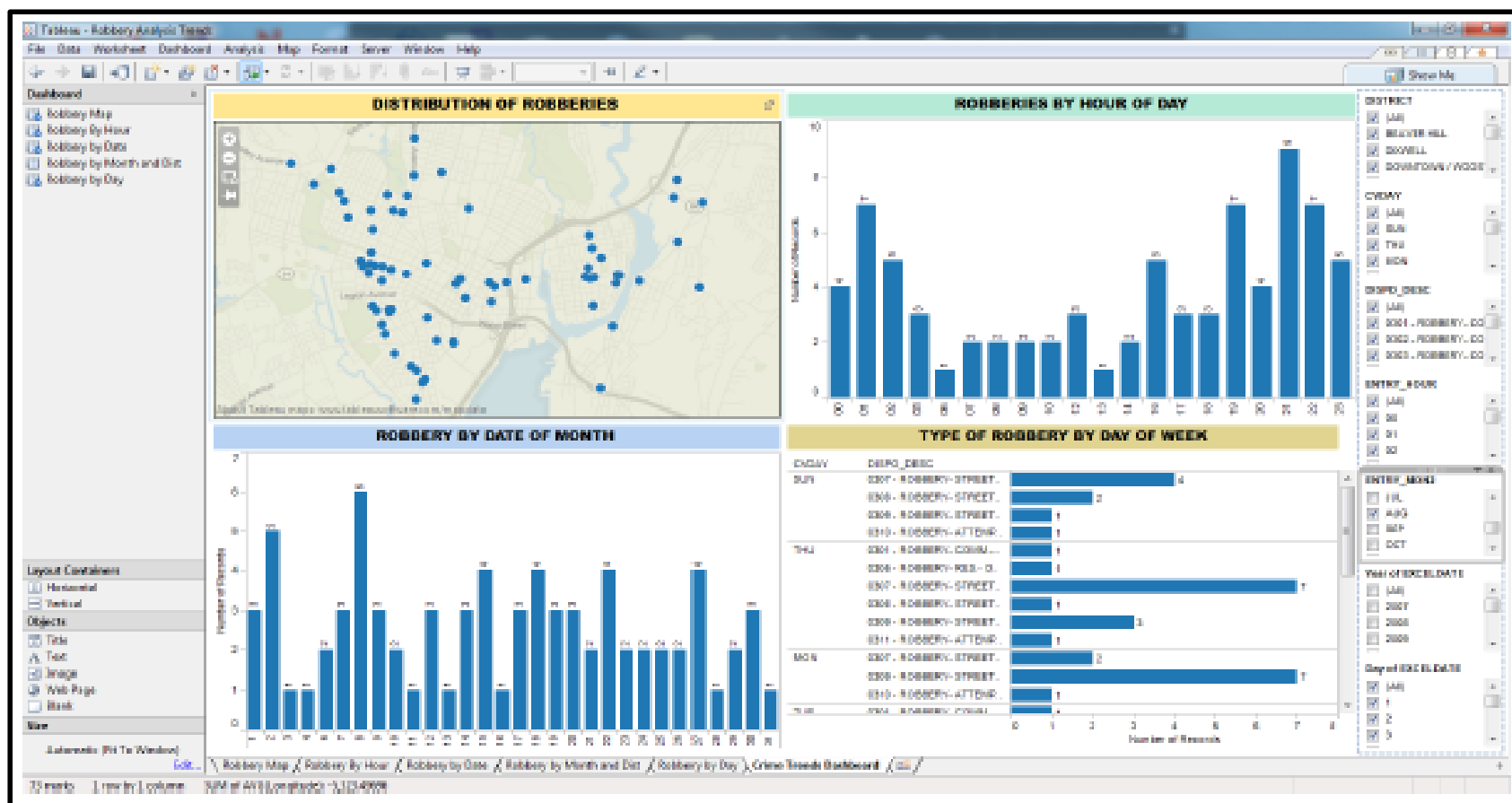
- Provided to District Managers.

**New Haven Police Department - Crime Analysis Unit Threshold Triage Report**  
*High Z-Scores indicate potential patterns or series within that crime and area*  
**Date Period:** September 02 to September (Earlier Dates Reflect on Data From Previous Year; e.g. Dec to May)

Offense	Beat	Weighted Avg	Normal Range	2012	Z-Score
<b>High</b> <i>These offenses are unusually high. Patterns or series may be at work in these areas.</i>					
03 - ROBBERY	FAIRHAVEN	1.33	0-2	4	3
07 - MOTOR VEHICLE THEFT	DOWNTOWN / WOOSTER SQUARE	1.61	0-3	4	2.01
<b>Normal</b> <i>These offenses are within the normal range for this area and time period.</i>					
06 - LARCENY-THEFT	HILL SOUTH	3.53	2-5	4	0.3
05 - BURGLARY	DWIGHT / CHAPEL	2.69	2-4	3	0.29
05 - BURGLARY	WESTVILLE / WEST HILLS	2.67	1-4	3	0.2
05 - BURGLARY	BEAVER HILL	4.72	1-8	4	-0.22
06 - LARCENY-THEFT	FAIRHAVEN	3.97	1-6	3	-0.39
06 - LARCENY-THEFT	NEWHALLVILLE	6.86	3-11	5	-0.47
07 - MOTOR VEHICLE THEFT	BEAVER HILL	3.72	1-7	2	-0.62
05 - BURGLARY	FAIRHAVEN	4.78	3-7	3	-0.8
05 - BURGLARY	NEWHALLVILLE	6	3-9	2	-1.26
06 - LARCENY-THEFT	DOWNTOWN / WOOSTER SQUARE	9.94	6-13	5	-1.43
07 - MOTOR VEHICLE THEFT	NEWHALLVILLE	4.33	3-6	2	-1.58
07 - MOTOR VEHICLE THEFT	FAIRHAVEN	5.42	4-7	2	-1.92
<b>Low</b> <i>These offenses are unusually low in these areas.</i>					
06 - LARCENY-THEFT	WESTVILLE / WEST HILLS	4.53	3-6	1	-2.6

# Strengths/Challenges – Crime Analysis

- Tableau Dashboards



# Next Steps

- Develop and deliver supervisor leadership/problem solving training curriculum.
  - How to supervise implementation of POP/SARA models
  - Pre/Post knowledge assessments
- Analysis/evaluation of walking beat data
- Continued outreach to community
  - Facebook
  - Twitter



# Key Outcome Measures

- Number of supervisors trained
- Measured ability of supervisors to better perform their duties
- Number of new partnerships established
- Number of new evidence-based tools and technologies utilized
- Measured affect of new initiatives to reduce violent crime

Questions?